

- 44 ... ♖xb7
 45 ♖a7+ ♖c8
 46 ♖xb7+ ♖d8
 47 ♖b8+ ♖e7
 48 ♖c5+ Black Resigns

GAME SIX

Par Excellence v
 Cowling (194) 2152

Irregular Queen's Pawn Opening

- 1 d4 d5
 2 ♖f3 ♖f6
 3 ♖g5 e6
 4 e3 ♖e7

The end of *Par Excellence's* book.

- 5 ♖bd2

5 c4 would have transposed to a Queen's Gambit Declined. This perfectly playable alternative leads to a quiet position in which White's minuscule advantage consists in having his bishop on g5 outside the pawn chain, in contrast to the black one on c8.

- 5 ... 0-0
 6 ♖d3 ♖bd7
 7 0-0 b6
 8 ♖e5!?

This leads to some deterioration of White's pawn structure in return for kingside attacking chances. Whilst not an immensely pretty move, it is logical and far from bad.

- 8 ... ♖xe5
 9 de ♖d7
 10 ♖xe7 ♖xe7
 11 f4 g6!?

Radically preventing a later f5 but weakening the black squares around his king. 11 ... ♖d8 might be more comfortable since the "Greek Gift" sacrifice 12 ♖xh7+ can't possibly be sound, and Black can defend when necessary with ...

♖f8 without creating the organic weaknesses on f6 and h6.

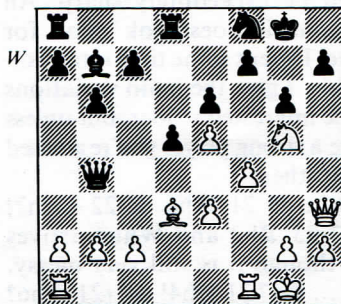
- 12 ♖f3 ♖b7
 13 ♖h3!

Par Excellence is playing very well here, slowly preparing a kingside attack.

- 13 ... ♖fd8?!

Although I recommended this on move 11, instead of 11 ... g6, here I disapprove. Given that he's played ... g6, Black ought probably to adopt a quite different plan here of challenging White's central control with ... f6. He could play this immediately: 13 ... f6!, and if 14 e4 ♖xf6 Black can prepare ... e5 to free his game.

- 14 ♖f3 ♖b4
 15 ♖g5 ♖f8



16 ♖ab1

White very sensibly defends his queenside. However, although there are no immediate threats on the kingside I for one would be almost irresistibly drawn by 16 ♖h6!?. If then 16 ... ♖xb2 17 ♖ab1! to drive the queen off the b2-f6 diagonal if possible, when both 17 ... ♖xa2 18 ♖bd1! (not 18 ♖be1 ♖a5!) and 17 ... ♖c3 18 ♖f3 are extremely dangerous. (The reason one shouldn't play 17 ♖ad1 at once is that then ... f6 will be possible in some positions.)

- 16 ... ♖a4!?

17 a3 c5
 18 c3 ♟a6!?

After successfully dancing on a volcano for several moves Black now takes the initiative on the queenside. Nevertheless the weaknesses on f6 and h6 still bode ill for him.

19 ♟xa6 ♖xa6
 20 ♖h6!?

The natural continuation of the kingside attack, but after Black's excellent riposte the white pieces get rather tangled up. 20 ♖f3! was better, since if (e.g.) 20 ... ♖d3? then 21 ♖bf1 ♖d2 22 ♖h6 and White can happily jettison the b-pawn in return for a crushing attack down the h-file.

In fact the position after 20 ♖f3! would be exceedingly sharp. All the same it does look good for White. I spent some time establishing this. I give the main variations for the interested reader, but unless you're a strong player you're advised to skip them.

a) 20 ... d4 21 ♖h6 de 22 ♟xh7! ♟xh7 23 ♖h3 and White arrives first, though it is still very messy.
 b) 20 ... ♟g7 21 ♖h4! d4! (21 ... h6? 22 ♖h3! or 21 ... h5 22 g4!) 22 cd! (22 ♖h3 h5 23 g4 dc 24 gh c2 25 h6+ ♟h8! 26 ♟xf7+ ♟h7! =; 22 e4 dc 23 bc ♖d2!) 22 ... cd 23 e4! d3 24 f5 ef 25 ef d2 (25 ... gf 26 ♖xf5 d2 - or 26 ... ♖d7 27 ♖bf1! etc - 27 ♖xf7+ ♟g8 28 ♖xf8+! ♟xf8 29 ♖f4+ forces mate) 26 f6+ ♟h8/g8 27 ♖h6! d1 ♖+ 28 ♖xd1 ♖xd1+ 29 ♟f2 ♖f1+ (29 ... ♖d2+ 30 ♟g3 ♖xg2+ 31 ♟xg2 ♖e2+ 32 ♟h3!; or 29 ... ♖f1+ 30 ♟g3 ♖xf3+ 31 gf!) 30 ♟g3 ♖e1+ 31 ♟h3!.

20 ... ♖d3!
 21 ♖fel?

Going "the wrong way"; but after 21 ♖bel ♖d2 White remains

a little tangled up - though he could keep going with 22 e4!.

21 ... ♖d7
 22 ♟h3!?

The start of a very nice manoeuvre to improve the knight's position.

22 ... ♖7d8

Presumably if the natural 22 ... ♖ad8 he feared a fork after ♟f2-g4-f6 and was hoping to inveigle the knight back to g5, when he could try something else instead of ... ♖d7.

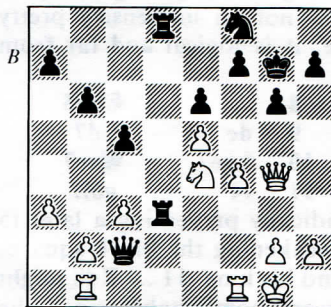
23 ♟f2 ♖c2
 24 e4!?

24 ♟g4 was better, keeping the d-file closed for the moment.

24 ... de
 25 ♟xe4 ♖d3
 26 ♖ec1 ♖e2
 27 ♟f6+ ♟h8
 28 ♖e1 ♖c2
 29 ♖f1

If he could include a rook in the kingside attack then White would quickly deliver mate, but Black's control of the d-file and general activity prevent this.

29 ... ♖d2
 30 ♖h3 ♖ad8
 31 ♖f3 ♟g7
 32 ♟e4 ♖d3
 33 ♖g4



33 ... ♖e3

Although he has successfully repulsed the first wave of attack

and controls the only open file Black's position remains vulnerable to tactics since the white knight is an immensely powerful piece.

34 ♖g5 ♜xe4!?

He decides to sacrifice the exchange to get rid of the menace. If 34 ... ♜dd3 35 ♖f6+ ♔g8 36 ♘d6 wins the exchange anyway. And 34 ... ♜d7 can be met by at least 35 f5, since if 35 ... ♜xe4 36 f6+ and 37 ♖h6 mates, whilst 35 ♘d6 (threat ♘e8+) is also dangerous.

However, Black could have tried 34 ... ♜e2, when if 35 ♜xd8? ♜xg2+ forces mate in 3. The only move is 35 ♘d6, when 35 ... ♜d7? loses material to 36 ♘e8+ ♔g8 (36 ... ♔h8?? 37 ♖f6+ and 38 ♜g7 mate) 37 ♘f6+, but 35 ... ♘d7! holds the position for the moment.

35 ♜xd8 ♜e2

36 ♖f6+ ♔g8

37 ♖g5 ♔c4!

38 ♜g3 ♘d7

39 ♜be1 ♘c5

40 ♜xe2 ♜xe2

Although White is the whole exchange up Black has some compensation since his pieces are very active, the white pawn structure is rather straggly, and there is an excellent square for the knight on d3. As long as he keeps the queens on White will have to play extremely accurately to make progress.

41 ♜f2 ♜e4

42 ♜e1 ♜d5

43 ♜e3

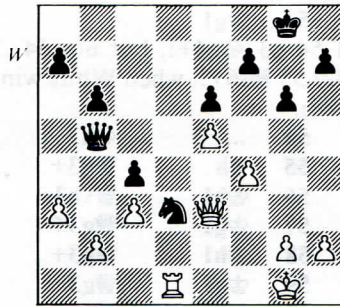
If 43 ♜d4!? ♜xd4 44 cd ♘d3 Black wins a pawn.

43 ... ♘d3

44 ♜d1 ♜b5

It would be nice for White if he could now avoid weakening the queenside pawns with 44 ♜d2, but the variations after 44 ... ♘b2 45 ♜d8+ ♔g7 46 f5!? ef 47 ♜d4

♘d3! are very unclear.



45 b4 ♜a4

46 ♜a1 ♜c2

47 ♜d4 b5

48 ♜f1 ♜b3?!

49 ♜xa7?

Keeping the material balance. But the crude 49 g4! would activate the f-file, especially after 49 ... ♜xa3? 50 f5 ef 51 gf gf 52 ♜d8+ ♔g7 53 ♜g5+ and 54 ♜xf5 etc.

For this reason 48 ... ♜b3 was a mistake. 48 ... ♜b2! would have been better since 49 g4 could then have been met by 49 ... ♜e2 and if 50 f5 ef 51 gf ♘xe5!

49 ... ♜xc3

50 ♔h1 ♔g7

Now Black is in the game again since he is well centralised and the passed c-pawn is very strong.

51 h4?

51 h3 was better, keeping more cover for the king and, above all, controlling g4.

51 ... ♜d2

52 ♜e7

If (e.g.) 52 ♜d4 then 52 ... c3 is very strong.

52 ... ♘f2+

53 ♔h2

If 53 ♔g1 ♘g4 is strong - here we see the bad side of 51 h4?.

53 ... ♜xf4+

Forcing a draw. He could have

played for a win with 53 ... ♖g4+!?
54 ♖h3 h5.

54 ♖g1

If 54 g3 ♖g4+!, but not 54 ... ♣f3?? 55 ♣f6+!, when White wins a piece.

54 ... ♖h3+!

55 gh ♣g3+

56 ♖h1 ♣xh3+

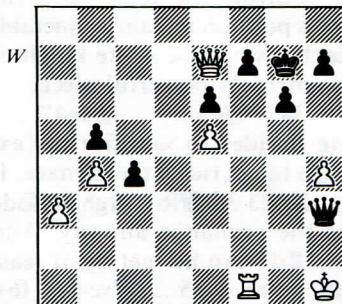
57 ♖g1 ♣g3+

58 ♖h1 ♣h3+

59 ♖g1 ♣g3+

60 ♖h1 ♣h3+

Drawn



Perpetual check was a just end to a very hard fight.

ALL 33 PAR EXCELLENCE MAJOR OPEN GAMES, IN TOURNAMENT ORDER

ROUND 1

White: H. Williams (141) 1 e4 e5 2 ♖f3 ♖c6 3 ♖c4 ♖c5 4 c3 ♖f6 5 ♣e2 d6 6 d3 0-0 7 0-0 a5 8 ♖e3 ♖xe3 9 fe ♖e6 10 ♖bd2 ♖xc4 11 ♖xc4 ♣d7 12 ♣f2 ♖g4 13 ♣h4 b5 14 h3 bc 15 hg cd 16 ♖ad1 ♣e6 17 ♖xd3 ♣xa2 18 ♖h2 ♣xb2 19 ♖h1 ♣e2 20 ♖g3 h6 21 ♖hd1 ♣c2 22 g5 ♖h7 23 gh ♖h8 24 ♖h1 ♖g8 25 h7+ ♖f8 26 ♖hd1 ♣b3 27 ♖g5 f6 28 ♖fl ♖b4 29 ♖xf6+ gf 30 ♣h6+ ♖e8 31 ♣g7 ♖f8 32 h8♣+ ♖xh8 33 c4 ♣xc4 34 ♣xh8+ ♖d7 35 ♣xa8 ♣xd3 36 ♣xa5 ♣xe3+ 37 ♖f3 ♣xe4 38 ♣a4+ c6 39 ♣a7+ ♖e6 40 ♣b8 ♖d5 41 ♣g8+ ♖c5 42 ♣xd8 ♣f4+ 0-1

Black: J.B.Langstaffe (e175) 1 d4 e6 2 c4 b6 3 ♖c3 ♖b7 4 e4 ♖b4 5 e5 ♖c6 6 ♖f3 d6 7 ♖e3 ♖xc3+ 8 bc de 9 de ♣xd1+ 10 ♖xd1 ♖d8 11 ♖xd8+ ♖xd8 12 c5 ♖e7 13 cb ab 14 h4 ♖d5 15 ♖d2 c5 16 ♖b5+ ♖e7 17 ♖d3 ♖c6 18 h5 h6 19 ♖h4 ♖a8 20 a4 ♖a6 21 c4 ♖db4 22 ♖e4 ♖d8 23 ♖xc6 ♖xc6 24 ♖g4 ♖f8 25 ♖e2 ♖a8 26 ♖d3 ♖b7 27 ♖h4 ♖xa4 28 ♖g4 ♖b4+ 29 ♖e2 ♖a6 30 ♖e3 ♖d5 31 ♖d2 ♖xe3 32 fe b5 33 ♖b3 bc 34 ♖d1 ♖a2 35 ♖xc5 ♖b5 36 ♖c1 ♖e2 37 e4 c3 38 ♖g3 c2 39 ♖f3 ♖xg2 40 ♖xe6+ ♖e7 41 ♖f4 ♖h2 42 ♖d5+ ♖f8 43 e6 ♖a4 44 ♖xf7+ ♖g8 45 ♖c7 ♖h1+ 46 ♖b2 ♖b1+ 47 ♖a3 c1♣+ 48 ♖xc1 ♖xc1 49 ♖xa4 ♖c4+ 50 ♖b5 ♖xe4 51 e7 ♖f7 52 ♖c6 0-1

White: G.Pritchard (e160) 1 e4 e5 2 ♖f3 ♖c6 3 ♖b5 a6 4 ♖e2 ♖f6 5 d3 ♖b4+ 6 ♖d2 ♖xd2+ 7 ♖bxd2 0-0 8 c3 ♖h8 9 ♣c2 d5 10 g3 ♖g4 11 h3 ♖e6 12 0-0-0 ♣e7 13 b3 ♣c5 14 ♖h2 ♣a3+ 15 ♣b2 ♣d6 16 ♖g5 ♖g8 17 ♖xe6 ♣xe6 18 ♖f3 d4 19 c4 ♖b4 20 ♖f1 c5 21 g4 ♖d7 22 ♖d3 ♣f6 23 ♖e2 b5 24 ♖b1 bc 25 de ♣f4 26 ♣d2 ♖f6 27 ♣xf4 ef 28 ♖h5 ♖xe4 29 a3 ♖c3+ 30 ♖a1 ♖c2+ 31 ♖b2 ♖xd1+ 32 ♖xd1 ♖e1 33 ♖xf4 ♖ab8 34 ♖h1 ♖ge8 35 ♖d5 ♖d3+ 36 ♖c2 ♖xf2 37 ♖f1 ♖xd1 38 ♖xd1 ♖xb3 39 ♖xf7 ♖xa3 40 h4 ♖a4 41 h5 ♖d8 42 h6 ♖xc4 43 ♖c7 gh 44 ♖xa6 d3 45 ♖f2 ♖a4 46 ♖xc5 ♖a1+ 47 ♖d2 0-1

ROUND 2

White: S.V.Woodhouse (154) 1 e4 e5 2 ♖f3 ♖c6 3 ♖b5 a6 4 ♖xc6 dc 5 d4 de 6 ♣xd4 ♣xd4 7 ♖xd4 ♖d7 8 ♖c3 0-0-0 9 ♖g5 ♖e7 10 ♖xe7 ♖xe7 11 0-0-0 ♖he8 12 ♖d2 c5 13 ♖de2 ♖e6 14 ♖hd1 ♖c6 15 ♖xd8+ ♖xd8 16 ♖f4 ♖d7 17 f3 f6 18 ♖cd5 f5 19 ♖c3 e4 20 ♖e1 g5 21 ♖fd5 h6 22 ♖f6 ♖c5 23 ♖xd7 ♖xd7 24 ♖e2 ♖e6 25 ef ♖xf5 26 ♖d2+ ♖c6 27 ♖e2 ♖d5 28 ♖xd5 ♖xd5 29 ♖d2 c5 30 c3 ♖c5 31 ♖e3 b6 32 g3 ♖f5 33 h3 ♖c7 34 g4+ ♖e6 35 ♖e4 ♖b5 36 f4 ♖d6+ 37 ♖e3 gf+ 38 ♖xf4 ♖f7 39 ♖e3 ♖d6 40 ♖g1 ♖f6 41 ♖f3 ♖f7 42 ♖f4 ♖d8 43 h4 ♖e6+ 44 ♖e4 h5 45 a3 ♖c7 46 g5+ hg 47 hg+ ♖g6 48 ♖e5 ♖a8 49 ♖d6 ♖b6 50 ♖xc5 ♖a4+ 51 ♖b4 ♖xb2 52 ♖e5+ ♖xg5 53 ♖c6 ♖f4 54 ♖b8 ♖d3+ 55 ♖a5 ♖e3 56 ♖xa6 ♖d2 57 ♖xb5 ♖xc3 58 ♖c7 ♖f4 59 ♖c5 ♖b3 60 ♖b5 ♖d3+ 61 ♖d4 ♖e1 62 ♖c5 ♖f3 63 a4 ♖e5 64 a5 ♖d3+ 65 ♖d4 ♖b4 66 ♖c5 ♖a6+ 67 ♖b6 ♖b4 68 ♖c5 ♖d3+ 69 ♖d4 ♖b4 1/2-1/2

Black: Madden (190) 1 e4 e6 2 d4 d5 3 ed ed 4 c4 ♀f6 5 ♀c3 ♀c6 6 cd ♀xd5 7 ♀b5 ♀b4 8 ♀c2 0-0 9 0-0 ♀g4 10 f3 ♀f5 11 ♀d2 ♀de7 12 a3 ♀a5 13 ♀g5 ♀f6 14 ♀c3 ♀b6 15 ♀c4+ ♀h8 16 ♀d2 ♀d7 17 b4 ♀ad8 18 ♀ad1 ♀e6 19 ♀xe6 ♀xe6 20 ♀e4 ♀f5 21 ♀c3 ♀xe3 22 ♀xe3 f5 23 b5 ♀b8 24 a4 fe 25 fe ♀xf1+ 26 ♀xf1 ♀d7 27 ♀a1 a5 28 ba ba 29 a5 ♀a7 30 ♀a4 ♀f6 31 e5 ♀g4 32 ♀e4 ♀xe5 33 ♀b7 ♀c6 34 ♀f2 ♀f8+ 35 ♀e1 ♀xd4 36 ♀xd4 ♀xd4 37 ♀xc7 ♀e8 38 ♀c2 ♀e3 39 ♀d1 ♀c3 40 ♀xc3 ♀xe2+ 41 ♀c1 ♀f8 42 ♀c2 ♀e1+ 0-1

(See Jon Speelman's annotations, Game 3)

ROUND 3

White: Holmes (208) 1 d4 d5 2 c4 ♀c6 3 ♀c3 dc 4 ♀f3 ♀f6 5 ♀g5 h6 6 ♀h4 g5 7 ♀g3 ♀e6 8 h3 ♀d5 9 e4 ♀xc3 10 bc ♀g7 11 ♀d2 f5 12 ef ♀f7 13 ♀d1 ♀d5 14 ♀c2 0-0-0 15 ♀e2 e6 16 fe ♀xe6 17 0-0 ♀b8 18 ♀fe1 ♀he8 19 ♀a4 ♀d5 20 ♀b1 ♀f6 21 ♀e5 ♀xe5 22 de ♀xe5 23 ♀f3 ♀xf3 24 gf ♀xg3 25 fg ♀e6 26 ♀xe6 ♀xe6 27 ♀b4 b6 28 ♀e7 ♀d6 29 ♀f8+ ♀c8 30 ♀e1 ♀b7 31 ♀g8 b5 32 a4 33 ♀xc4 ♀d7 34 ♀e7 ♀b8 35 f4 gf 36 f a3 37 ♀b3+ ♀c8 38 ♀xa3 a6 39 ♀h7 ♀hx3 40 ♀c5 ♀d7 41 ♀hx6 ♀g4 42 ♀c6 ♀d1+ 43 ♀f2 ♀d2+ 44 ♀g3 ♀b8 45 ♀h8+ ♀c8 46 ♀xa6 ♀d3+ 47 ♀f2 ♀d2+ 48 ♀c3 ♀d8 49 ♀xd8 c6 50 ♀xc8 mate

Black: M.J.Buckmaster (190) 1 d4 ♀f6 2 c4 c5 3 d5 d6 4 ♀c3 g6 5 e4 ♀g7 6 ♀f3 0-0 7 ♀d3 e6 8 0-0 e5 9 ♀b3 h6 10 ♀d2 ♀h5 11 e2 ♀d7 12 a4 f5 13 ef gf 14 e2 ♀e7 15 h3 e4 16 ♀h2 f4 17 ♀fe1 f3 18 gf ♀h4 19 ♀xe4 ♀e5 20 f4 ♀hx3 21 fe ♀xf2 22 de e5 23 ♀f4 ♀xf4 24 ♀xb7 ♀g4+ 25 ♀xg4 ♀xg4+ 26 ♀f2 ♀f8+ 27 ♀e3 ♀g7 28 ♀xa7 ♀xb2 29 ♀g1 ♀h4 30 ♀ad1 ♀e8 31 ♀g3 ♀g5+ 32 ♀d3 ♀e5 33 ♀c2 ♀c3+ 34 ♀b1 ♀b3 35 ♀c2 ♀b4 36 ♀h7+ ♀hx7 37 ♀c2 ♀c3+ 38 ♀b1 ♀b3 39 ♀b7 40 ♀c2 ♀b4 41 ♀d3 ♀xc4+ 0-1

White: Baker (184) 1 e4 e5 2 f4 ♀c5 3 ♀h5 ♀c6 4 fe g6 5 ♀f3 ♀g5 6 ♀h3 ♀e7 7 c3 ♀h4+ 8 g3 ♀xe5 9 ♀g2 ♀h6 10 ♀f4 ♀c6 11 d4 ♀e7 12 ♀a3 g5 13 ♀d5 ♀d8 14 ♀b5 ♀f8 15 ♀bxc7 ♀b8 16 ♀b5 a6 17 ♀a3 ♀g7 18 ♀f2 ♀f6 19 ♀xf6 ♀xf6 20 ♀e3 ♀e7 21 ♀c4 b5 22 d5 b4 23 ♀c4 bc 24 bc ♀e8 25 0-0 f6 26 ♀ab1 ♀xb1 27 ♀xb1 ♀g6 28 ♀b6 ♀a7 29 ♀xc8 ♀xc8 30 ♀g8 ♀f8 31 ♀xc8+ ♀d8 32 ♀f5 ♀xf5 33 ef ♀e7 34 ♀c1 ♀e8 35 ♀a3 ♀h8 36 ♀d6 h5 37 h3 g4 38 h4 a5 39 a4 ♀h7 40 ♀c7 ♀f8 41 ♀xd8 ♀g7 42 ♀e7 ♀h8 43 ♀xf6+ ♀xf6 44 ♀hx8 1-0

ROUND 4

Black: Kemp (189) 1 e4 ♀c6 2 d4 d5 3 ♀c3 e5 4 ♀b5 ♀b4 5 de d4 6 a3 ♀a5 7 b4 ♀b6 8 ♀a4 ♀d7 9 ♀e2 ♀ge7 10 ♀xb6 ab 11 ♀b2 ♀xe5 12 ♀xd7+ ♀xd7 13 ♀xd4 ♀xd4 14 ♀xd4 ♀7c6 15 ♀c3 f6 16 0-0 b5 17 ♀f4 ♀f7 18 ♀fd1 ♀hd8 19 ♀xd8 ♀xd8 20 ♀d5 c6 21 ♀b6 ♀a6 22 ♀xe5 fe 23 ♀d7 ♀e7 24 ♀xe5 ♀e6 25 f4 c5 26 ♀d3 1-0

Black: R.Willmoth (174) 1 e4 d6 2 d4 g6 3 ♀c3 ♀g7 4 ♀b5+ c6 5 ♀e2 ♀b6 6 ♀f3 ♀g4 7 ♀c4 e6 8 d5 cd 9 ed e5 10 0-0 ♀f6 11 a4 a6 12 ♀b3 ♀bd7 13 ♀e3 ♀c7 14 h3 ♀xf3 15 ♀xf3 0-0 16 a5 ♀ae8 17 ♀e2 h6 18 ♀c4 ♀h5 19 ♀fe1 f5 20 h4 f4 21 ♀d2 f3 22 gf ♀f4 23 ♀f1 ♀d8 24 ♀d3 ♀hx4 25 ♀xf4 ♀xf4 26 ♀xg6 ♀ef8 27 ♀e4 ♀f6 28 ♀a3 ♀h8 29 ♀g2 ♀g8 30 ♀e2 ♀f8 31 ♀g3 ♀h5 32 ♀h2 ♀g3 33 ♀hx4 ♀xe4+ 34 ♀g4 ♀fxg4+ 35 fg ♀xg4+ 36 ♀h2 ♀c5 37 ♀f3 ♀e7 38 ♀h3 ♀g5 39 ♀g1 ♀xg1 40 ♀xg1 ♀g7 41 b4 ♀e4 42 c4 ♀f6 43 ♀g2 ♀f5 44 ♀f3+ ♀f4 45 ♀a3 ♀f6 46 f3 h5 47 ♀d3 e4 48 fe+ ♀xe4 49 ♀d1 h4 50 ♀h3 ♀g3 51 ♀f1 ♀e5 52 ♀d1 ♀e4 53 ♀g2 h3+ 54 ♀f3 h2 55 ♀g2 ♀f2 56 ♀e1+ ♀d4 57 ♀xg3 h1 ♀58 ♀hx1 ♀hx1 59 ♀g2 ♀xc4 60 ♀hx1 ♀xd5 0-1

(See Jon Speelman's annotations, Game 2)

ROUND 5

White: J.W.Dale (121) 1 d4 d5 2 c4 c6 3 ♀c3 ♀f6 4 ♀g5 de 5 a4 ♀a5 6 ♀xf6 gf 7 e4 ♀b4 8 ♀d2 ♀d7 9 a5 c5 10 ♀d5 ♀xd2+ 11 ♀xd2 ♀a6 12 dc ♀c8 13 ♀c3 ♀xc5 14 f4 f5 15 ♀c3 ♀b4 16 ♀d2 ♀g7 17 e5 a6 18 ♀e2 ♀c6 19 ♀f3 ♀xa5 20 ♀d4 ♀h6 21 g3 ♀xe5 22 ♀f3 ♀c5 23 ♀he1 ♀g7 0-1

Black: Butt (175) 1 e4 e6 2 d4 d5 3 e5 c5 4 c3 ♀c6 5 ♀f3 ♀b6 6 ♀e2 ♀ge7 7 dc ♀c7 8 ♀d4 ♀xe5 9 ♀b5 ♀xc5 10 ♀d4 ♀xd4 11 ed 12 5c6 12 ♀c7+ ♀d7 13 ♀xa8 ♀xd4 14 ♀d3 e5 15 ♀c3 e4 16 ♀b5+ 17 ♀c7 17 ♀d4 b5 18 ♀d4 ♀xb5 ♀xb5 19 ♀xb5 ♀b7 20 0-0 d4 21 ♀e1 f5 22 g4 ♀b4 23 ♀d1 23 d4 gf ♀f8 25 a3 ♀c5 26 ♀xd3 ed 27 ♀xd3+ ♀c8 28 b4 ♀d4 29 ♀a2 ♀xa8 30 b5 ♀c5 31 ♀c2+ ♀b7 32 ♀g3 ♀b6 33 ♀f1 ♀f3 34 ♀e3 ♀xe3 35 fe ♀xf5 36 ♀xg7 ♀hx2+ 37 ♀e1 ♀f3+ 38 ♀e2 h5 39 ♀c8 40 ♀d5 40 a4 h4 41 ♀b8+ ♀c5 42 ♀xa7 h3 43 ♀g7 h2 44 ♀h8 ♀c4+ 45 ♀d1 ♀b3+ 46 ♀cd e4 47 ♀g3 ♀c5+ 48 ♀b2 ♀c2+ 49 ♀a1 ♀d2 50 ♀g4+ ♀a3 51 ♀hx2 ♀c1 mate

White: C.Moors (e187) 1 ♡f3 d5 2 g3 c5 3 ♠g2 ♣c6 4 0-0 ♡f6 5 c4 e6 6 b3 ♠d6 7 ♠b2 0-0 8 e3 dc 9 bc e5 10 d3 ♣b6 11 ♣e2 ♠f5 12 ♠d1 ♡g4 13 ♣c3 ♣b4 14 ♡e1 ♠fd8 15 a3 ♣c6 16 ♡d5 ♣a5 17 ♠c3 ♣a4 18 h3 ♣h6 19 g4 ♠d7 20 ♣b2 b6 21 f4 f6 22 g5 fg 23 fe ♠b8 24 e6 ♠e8 25 ♠xg7 ♡f5 26 ♡f6+ ♡xg7 27 ♣xe8+ ♡g8 28 ♣f6 ♠d6 29 ♣f7+ ♡h8 30 ♡f6 ♡g7 31 ♡f3 ♠ac8 32 ♡xg5 ♡e5 33 e7 ♠g8 34 ♣d5 ♡f5 35 ♡xg8 ♠xg8 36 ♣xg8+ ♡xg8 37 e8♣+ ♣xe8 38 ♠d5+ ♡h8 39 ♠e1 ♣g6 40 ♠a2 ♣xg5+ 41 ♠g2 ♡g3 0-1

ROUND 6

Black: Flunkert (e155) 1 d4 ♡f6 2 c4 e5 3 de ♡e4 4 ♡f3 ♠b4+ 5 ♠d2 ♡xd2 6 ♣bxd2 ♣c6 7 a3 ♠xd2+ 8 ♣xd2 ♣e7 9 ♣c3 b6 10 b4 ♠b7 11 b5 ♡a5 12 e3 0-0-0 13 ♠d3 ♠he8 14 ♠c1 ♠xf3 15 gf ♣xe5 16 ♣xe5 ♠xe5 17 f4 ♠c5 18 ♡e2 d5 19 ♠f5+ ♡b8 20 cd ♠cxd5 21 ♠cd1 ♡c4 22 a4 g6 23 ♠xd5 ♠xd5 24 ♠d3 ♡d6 25 f3 ♡c8 26 e4 ♠d4 27 ♠a1 ♣b7 28 ♡e3 ♠b4 29 e5 ♡c5 30 ♠c2 ♠c4 31 ♠a2 ♠c3+ 32 ♡f2 ♡d3+ 33 ♠xd3 ♠xd3 34 ♡e2 ♠b3 35 ♡f2 ♡d7 36 ♠d2+ ♡e6 37 ♠c2 ♡d7 38 ♠c4 ♠d3 39 ♡e2 ♠a3 40 ♠d4+ ♡e6 41 h3 ♠c3 42 h4 h5 43 ♡f2 c5 44 bc ♠xc6 45 ♡e3 a6 46 ♡e4 b5 47 ♠b4 ♠c4+ 48 ♠xc4 bc 49 a5 c3 50 ♡d3 ♡d5 51 ♡xc3 ♡c5 52 ♡d3 ♡b5 53 ♡e4 ♡xa5 54 f5 ♡b6 55 f6 ♡c6 56 e6 fe 57 f7 1-0

White: G.L.House (181) 1 e4 e5 2 ♡f3 ♣c6 3 ♠b5 ♠c5 4 0-0 d6 5 c3 ♠d7 6 d4 ♠b6 7 ♠e1 ♡ge7 8 a4 a6 9 ♠c4 0-0 10 h3 ed 11 cd ♣b8 12 ♣c3 ♣a7 13 ♠e3 ♠e6 14 d5 ♡a5 15 ♠f1 ♠xe3 16 ♠xe3 ♠xh3 17 gh ♣b6 18 ♣d4 ♣xd4 19 ♡xd4 b6 20 b4 c5 21 dc ♡axc6 22 ♡xc6 ♡xc6 23 ♡d5 ♠fb8 24 ♠c1 ♡d4 25 ♠ec3 a5 26 ba ♡e6 27 ♡xb6 ♠a7 28 ♠c8+ ♠xc8 29 ♠xc8+ ♡f8 30 ♠b5 g5 31 ♡d7 ♡g7 32 ♡xf8 ♠xa5 33 ♡d7 ♠a7 34 ♡g2 h5 35 ♡g3 ♡h7 36 f4 gf+ 37 ♡xf4 1-0

(See Jon Speelman's annotations, Game 6)

ROUND 7

White: S.Burke (178) 1 d4 d5 2 ♡f3 ♡f6 3 e3 c5 4 c3 ♣bd7 5 ♠d3 e6 6 ♣bd2 c4 7 ♠c2 ♠d6 8 0-0 ♡b6 9 ♡e5 0-0 10 f4 ♣c7 11 ♠f3 ♡h8 12 ♠h3 ♣bd7 13 ♠xh7 ♡b8 14 ♣e1 ♠xe5 15 ♠c2+ ♡g8 16 ♣h4 ♡h5 17 ♣xh5 f5 18 fe ♡a6 19 ♡f3 g5 20 ♣xg5+ ♣g7 21 ♣h5 ♠d7 22 ♠g3 ♠f7 23 ♠xg7+ ♠xg7 24 ♠d2 1-0

White: J.P.Manley (190) 1 d4 d5 2 ♣c3 ♡f6 3 ♠g5 ♣bd7 4 e3 e6 5 ♡f3 ♠b4 6 ♠e2 ♠xc3+ 7 bc h6 8 ♠xf6 ♡xf6 9 0-0 0-0 10 c4 a6 11 c3 dc 12 a4 ♣d5 13 ♠e5 b5 14 ♣c2 ♠b7 15 ♠f3 ♡e4 16 g3 ♠fd8 17 ♠d2 f5 18 f3 ♡f6 19 ♠a2 c5 20 e4 ♣d6 21 ♠d1 cd 22 cd ♡d7 23 ♡xd7 ♣xd7 24 ♣c3 ♠dc8 25 ♠b1 ♡h7 26 a5 ♣f7 27 ♠e2 ♠ab8 28 ♠a2 ♣f6 29 ♠d2 f4 30 g4 ♡g8 31 ♡f1 ♠c6 32 ♡gl ♠d8 33 ♠c2 ♣d6 34 ♠b4 ♠b7 35 ♠f1 ♠d8 36 ♠d2 ♠bc8 37 ♡h1 ♣c7 38 ♠a2 ♠d7 39 ♠b1 ♣d6 40 ♠d2 ♠c6 41 ♠bb2 ♠cc7 42 ♠b1 ♡h7 43 ♠g2 ♠d6 51 ♠g2 ♠h8 52 ♠f1 ♠g2 53 ♠g2 ♠d8 54 ♠f1 ♠cd7 55 ♠g2 ♣f8 56 ♠f1 ♣g7 57 ♠bd1 ♠c7 58 ♠b1 ♠c5 59 ♠bd1 ♠cc8 60 ♠b1 ♠d7 61 ♠g2 ♠cc7 62 ♠f1 ♠d8 63 ♠g2 1/2-1/2

(See Jon Speelman's annotations, Game 5)

ROUND 8

Black: J.Wilman (155) 1 e4 e5 2 ♡f3 ♣c6 3 d4 ed 4 ♡xd4 ♠c5 5 ♠e3 ♣f6 6 c3 ♡ge7 7 ♡c2 b6 8 ♠xc5 bc 9 ♡d2 ♠b8 10 ♣b3 d6 11 ♡e3 0-0 12 f3 a5 13 ♡d5 ♡xd5 14 ed ♠e8+ 15 ♡f2 ♡e5 16 ♠e2 a4 17 ♡d2 ♡g4+ 18 ♡e1 ♡e3 19 ♣xa4 ♡xg2+ 20 ♡f2 ♠h3 21 ♠b5 ♠xb5 22 ♣xb5 ♣h4+ 23 ♡gl ♠e1+ 24 ♡f1 g6 25 ♠xe1 ♣xe1 26 ♣b8+ ♡g7 27 ♣c8 ♡f4 28 ♣xh3 ♡xh3+ 29 ♡g2 ♡f4+ 30 ♡gl ♣e2 31 a4 ♣g2 mate

Black: D.J.Coleman (201) 1 d4 ♡f6 2 e4 g6 3 ♣c3 ♠g7 4 e4 d6 5 f4 0-0 6 ♡f3 c5 7 dc ♣a5 8 ♠d3 ♣xc5 9 ♣e2 ♣c6 10 ♠e3 ♣a5 11 0-0 ♡g4 12 ♠fc1 ♣h5 13 ♠f2 ♡d4 14 ♣d1 ♡xf3+ 15 ♣xf3 ♣xh2+ 16 ♡f1 ♣h5 17 ♡e1 ♣a5 18 ♠h4 ♡f6 19 f5 e6 20 ♣g3 ef 21 ♠xf6 ♠xf6 22 ♣xd6 ♠xc3 23 ♠xc3 fe 24 ♠xe4 ♠e8 25 ♣d5 ♣xd5 26 cd ♠xe4+ 27 ♡f2 ♠d4 28 ♠e1 ♠f5 29 ♠b3 b6 30 ♡f3 0-1

(See Jon Speelman's annotations, Game 1)

ROUND 9

White: L.J.Smart (178) 1 e4 e5 2 ♡f3 ♣c6 3 ♠b5 a6 4 ♠a4 ♡f6 5 0-0 b5 6 ♠b3 ♠b7 7 ♠e1 ♠c5 8 c3 d6 9 d4 ♠b6 10 ♠g5 h6 11 ♠h4 0-0 12 a4 ed 13 ab ab 14 ♠xa8 ♠xa8 15 cd ♠e8 16 ♣d3 ♡a5 17 ♠xf6 gf 18 ♡h4 ♡xb3 19 ♡f5 ♠xe4 20 ♠xe4 ♠xe4 21 ♣xe4 ♣f8 22 ♡c3 c6 23 d5 ♡c5 24 ♣g4+ ♡h8 25 ♣h4 b4 26 ♣xb4 ♣e8 27 ♡e3 ♠d8 28 ♣f4 cd 29 ♣xd6 ♠e7 30 ♣xd5 ♠c6 31 g3 ♣b8 32 ♣d7 ♣xb2 33 ♣e8+ ♠f8 34 ♣xf7 ♣xc3 35 ♣xe6 ♣e5 36 ♣xe5 fe 37 ♡g4 ♠g7 38 ♡f1 e4 39 ♡e2 ♡h7 40 ♡e3 ♡g6 41 ♡c4 ♠f8 42 ♡e3 ♠g7 43 ♡d2 ♠d4 44 ♡c2 ♡f6 45 ♡b3 ♡e6 46 ♡c4 ♠e5 47 h3 ♠f6 48 ♡g4 ♠g7 49 ♡e3 ♠f6 50 ♡b3 ♠e5 51 ♡c2 ♠f6 52 ♡d2 ♠d4

53 ♠g4 h5 54 ♠e3 ♠f6 55 ♠e2 ♠c5 56 ♠g2 ♠f5 57 ♠e3+ ♠f6 58 h4 ♠d6 59 ♠f1 ♠e6 60 ♠g2
 ♠b4 61 g4 hg 62 ♠g3 ♠f7 63 h5 ♠g7 64 ♠f4 ♠h6 65 ♠xg4 ♠c5 66 ♠f5+ ♠h7 67 ♠g3 ♠a7
 68 ♠e3 ♠h6 69 ♠h4 ♠xe3 70 fe ♠g7 71 ♠g5 ♠h7 72 ♠f5 ♠g7 73 ♠xe4 1-0

White: G.Dormand (164) 1 e4 e5 2 ♠c3 ♠c6 3 ♠f3 ♠f6 4 ♠e2 ♠b4 5 d3 d5 6 ♠d2 d4 7 ♠b1
 ♠xd2+ 8 ♠bxd2 0-0 9 0-0 ♠d6 10 ♠e1 ♠d6 11 g3 a5 12 f4 ef 13 gf ♠b4 14 f5 ♠d7 15 ♠c1 ♠d6
 16 ♠c4 ♠c5 17 a4 ♠xe4 18 ed d3+ 19 ♠e3 ♠xe3+ 20 ♠xe3 de 21 ♠f4 ♠fe8 22 ♠f2 ♠d4 23 ♠d5
 ♠ac8 24 f6 g5 25 ♠f3 ♠xf3 26 ♠xf3 g4 27 ♠g1 ♠xe4 28 ♠e7+ ♠h8 29 ♠xc8 gf 30 ♠e7 ♠g4
 31 ♠xg4 ♠xg4 32 ♠d5 c6 33 ♠e3 ♠e6 34 c3 ♠b3 35 ♠f5 b6 36 ♠d4 ♠d5 37 c4 ♠e4 38 c5 bc
 39 ♠d3 h6 40 ♠xa5 ♠h7 41 ♠b7 c4 42 ♠c5 ♠f5 43 a5 ♠c8 44 a6 ♠xe4 45 ♠xa6 ♠g6 46 ♠d8
 c5 47 ♠d7 ♠f5 48 ♠xc5 ♠e5 49 ♠b7 ♠xf6 50 ♠d6 c3 51 bc ♠e6 52 ♠e4 f5 53 ♠d2 ♠d5 54 ♠xf3
 ♠c4 55 ♠xe2 ♠xc3 56 ♠e3 ♠c4 1-0

(See Jon Spielman's annotations, Game 4)

ROUND 10

Black: S.G.Walker (172) 1 e4 e6 2 d4 d5 3 ed ed 4 ♠d3 ♠e6 5 ♠c3 ♠d6 6 ♠f3 h6 7 ♠e5 ♠c6
 8 ♠xc6 bc 9 0-0 ♠f6 10 ♠e3 ♠g7 11 ♠e2 0-0 12 f4 ♠f5 13 a3 ♠fe8 14 g4 ♠g6 15 h3 ♠xd3
 16 ♠xd3 ♠xd3 17 cd ♠f5 18 ♠f2 ♠e3 19 ♠fe1 ♠xf4 20 ♠e2 ♠g5 21 ♠ec1 ♠xg4 22 hg ♠xe2
 23 ♠xc6 ♠xb2 24 ♠xc7 ♠e8 25 ♠c6 ♠ee2 26 ♠c8+ ♠h7 27 ♠c7 ♠xf2 28 ♠e1 ♠g2+ 29 ♠h1
 ♠xg4 30 ♠xf7 ♠f4 0-1

Black: M.Jackson (177) 1 d4 b5 2 e4 a6 3 ♠f3 ♠b7 4 ♠d3 e6 5 0-0 c5 6 dc ♠xc5 7 a4 b4 8 ♠bd2
 ♠f6 9 e5 ♠d5 10 ♠e4 ♠e7 11 c4 bc 12 bc ♠c7 13 ♠b1 ♠c6 14 ♠d6+ ♠xd6 15 ed ♠c8 16 ♠c2
 h6 17 ♠d2 a5 18 ♠b2 ♠b8 19 c4 ♠f6 20 ♠a3 0-0 21 ♠c3 ♠e8 22 ♠b2 ♠a6 23 ♠fb1 ♠xb2
 24 ♠xb2 f5 25 ♠c5 g5 26 ♠b6 ♠f6 27 ♠d2 ♠a8 28 ♠xf5 ef 29 ♠xf5 ♠e8 30 ♠xf6 ♠xc4 31 ♠b1
 ♠e6 32 ♠f3 ♠g6 33 ♠e4 ♠d5 34 ♠e1 ♠xe4 35 ♠b3+ ♠f7 36 ♠xf7+ ♠xf7 37 ♠xg5 hg 38 ♠xe4
 ♠e8 39 ♠xe8 ♠xe8 40 g3 ♠f7 41 h4 gh 42 gh ♠g6 43 f4 ♠h5 44 ♠f2 ♠xh4 45 ♠f3 ♠h5 46 ♠e3
 ♠g6 47 ♠e4 ♠f6 48 ♠d3 ♠f5 0-1

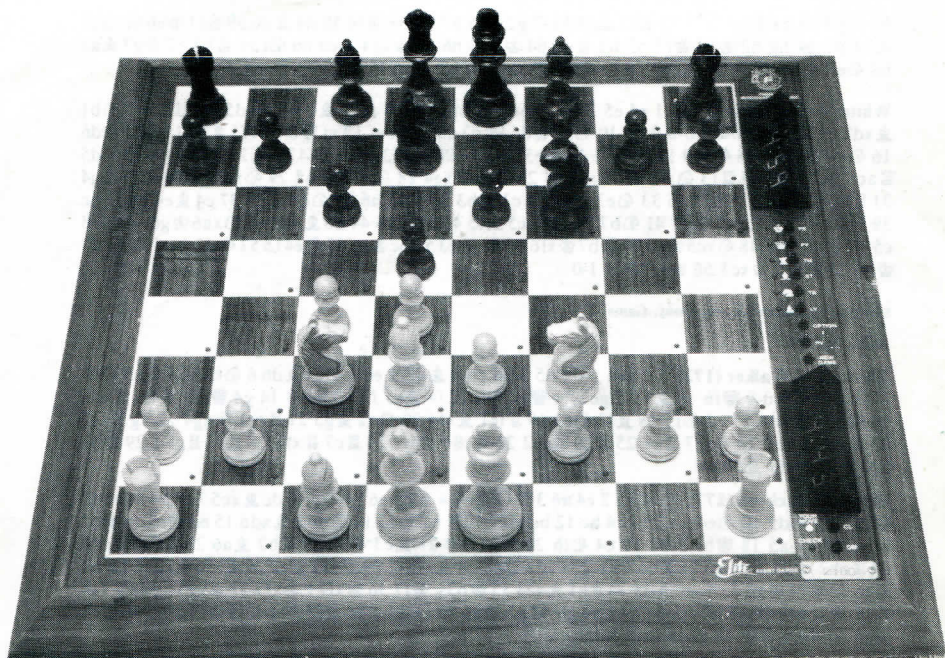
B: H. Oei (188) 1 e4 c6 2 d4 d5 3 ed cd 4 ♠d3 ♠f6 5 ♠f3 ♠g4 6 ♠c3 ♠c6 7 ♠e2 ♠c8 0-0 e6 9 ♠g5
 ♠e7 10 ♠d3 0-0 11 ♠e3 ♠f5 12 ♠b5 ♠c7 13 ♠a4 a6 14 a3 ♠a5 15 ♠d2 ♠c4 16 ♠xc4 dc 17 ♠h4
 ♠g4 18 ♠f3 ♠a8 19 ♠e2 b5 20 ♠a5 ♠xa5 21 ♠xa5 ♠xc2 22 ♠g3 ♠f6 23 ♠fc1 ♠g6 24 ♠e5
 ♠fc8 25 ♠xg6 hg 26 ♠e1 ♠d8 27 ♠c3 ♠b6 28 ♠e4 ♠d5 29 ♠ab1 ♠c6 30 ♠d2 a5 31 ♠a1 ♠ac8
 32 ♠f3 f6 33 ♠d2 g5 34 ♠e4 ♠c7 35 ♠ae1 ♠f7 36 h4 gh 37 ♠h4 b4 38 ab 39 ♠e1 a1 c3 40 bc
 bc 41 ♠c1 ♠b8 42 ♠e1 ♠cb6 43 ♠a2 ♠b2 44 ♠a1 ♠b1 45 ♠c2 ♠xa1 46 ♠xa1 ♠b1 47 ♠b3
 ♠xb3 0-1

ROUND 11

B: P. Dargan (164J) 1 e4 c5 2 ♠c3 ♠c6 3 f4 g6 4 ♠f3 ♠g7 5 ♠c4 e6 6 e5 d5 7 ed ♠xd6 8 g3 ♠f6
 9 d3 0-0 10 ♠b5 ♠b8 11 ♠e3 a6 12 ♠xc5 ab 13 ♠xf8 bc 14 ♠xg7 ♠xg7 15 dc e5 16 ♠d2 ef
 17 ♠xf4 ♠xf4 18 gf ♠g4 19 ♠e5 ♠xe5 20 fe ♠e8 21 ♠f2 ♠xe5 22 ♠he1 ♠c5 23 b3 b5 24 cb
 ♠xc2+ 25 ♠g1 ♠f3 26 ♠g2+ 27 ♠f1 ♠h2 28 ♠g1 ♠xh3 29 ♠f1 ♠e4 30 ♠xf3 ♠xf3 31 b6
 ♠f6 32 ♠e1 ♠c3 33 ♠e3 ♠xa2 34 b7 ♠b6 35 ♠e7 ♠xb3 0-1

White: I.Miyall (185) 1 e4 e5 2 ♠c4 ♠c5 3 ♠c3 ♠f6 4 d3 0-0 5 ♠g5 c6 6 ♠f3 b5 7 ♠b3 b4 8 ♠d1
 ♠e7 9 ♠e3 d6 10 h4 h6 11 ♠f5 hg 12 hg ♠xf5 13 ♠xf5 ♠d7 14 gf ♠xf5 15 fe ♠c8 16 ef ♠+
 ♠xf8 17 ♠f3 ♠e7 18 0-0-0 ♠d7 19 ♠h3 ♠f8 20 ♠h1 ♠g6 21 ♠b1 ♠f8 22 ♠h4 ♠xh4 23 ♠xh4
 g5 24 ♠h8+ ♠g7 25 ♠h7+ ♠g8 26 ♠h6 ♠g7 27 g3 ♠d7 28 ♠h7+ ♠f6 29 ♠h6+ ♠e7
 30 ♠xf7 ♠xf7 31 ♠xf7+ ♠xf7 32 ♠h7+ ♠e8 33 ♠xd7 ♠xd7 34 ♠c1 ♠e6 35 ♠d2 ♠f6 36 ♠e3
 d5 37 ♠f3 d4 38 ♠g4 ♠g6 39 f4 ef 40 gf gf 41 ♠xf4 ♠f6 42 e5+ ♠e6 43 ♠e4 c5 1-0

White: C.C.Sherwood (175) 1 c4 e5 2 ♠c3 d6 3 g3 ♠e6 4 ♠g2 c6 5 d3 ♠f6 6 ♠f3 ♠e7 7 0-0-0
 8 ♠b1 ♠bd7 9 b4 d5 10 ♠g5 d4 11 ♠xe6 fe 12 ♠e4 ♠xe4 13 ♠xe4 ♠c7 14 a4 a5 15 b5 ♠b4
 16 ♠b2 cb 17 cb ♠ac8 18 ♠g5 ♠c3 19 ♠a2 ♠c5 20 ♠g2 b6 21 h4 ♠d7 22 ♠h2 h6 23 ♠c1 ♠d6
 24 ♠a3 ♠f7 25 ♠g1 ♠f8 26 ♠h3 ♠f6 27 e4 ♠e7 28 ♠h5 ♠d7 29 ♠xe5 ♠xd3 30 ♠d6 ♠xd6
 31 ♠xd6 ♠b4 32 ♠xb4 ab 33 e5 ♠f5 34 ♠xf5 ef 35 ♠d1 b3 36 ♠e2 ♠f7 37 e6+ ♠e7 38 ♠f1 b2
 39 ♠b1 ♠e8 40 ♠xb2 ♠xb2 41 ♠xb2 ♠xa4 42 ♠e2 ♠xe6 43 ♠c2 d5 44 ♠c6 b4 45 ♠xb6
 ♠b2+ 46 ♠d3 ♠xf2 47 ♠g6 ♠b2 48 b6 ♠c5 49 ♠xg7 ♠b3+ 50 ♠d2 ♠xb6 51 ♠f7 ♠f3 52 ♠e2
 ♠xg3 53 ♠xf5 d3+ 54 ♠d2 ♠g4 55 ♠xd3 1/2-1/2



The superb new «ELITE AVANT GARDE 2100» (identical program, but with a host of valuable features not available on the «PAR EXCELLENCE 2100») (19 × 18 × 1½ inches | 52 × 45 × 3,5 cms).

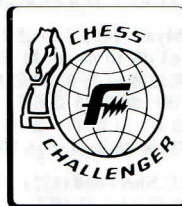


The budget «EXCELLENCE»
(approx. 11 × 10 × 1½ inches / 28 × 26 × 3,5 cms).

Copyright © 1986 Competence Ltd., The Chess Computer Specialists,
17, St Martin's Street, Wallingford, Oxfordshire, OX10 0EA, Tel. 0491-34663
No part of this publication may be reproduced in any way without the written
permission of the copyright owners.

DFL

Elite Avant Garde 2100 1799.-
Par Excellence 2100 . . . 649.-
Excellence 449.-



**FIDELITY
ELECTRONICS (BENELUX) B.V.**

Postbus 591
NL-4900 AN Oosterhout, Holland ☎ 08380-13604